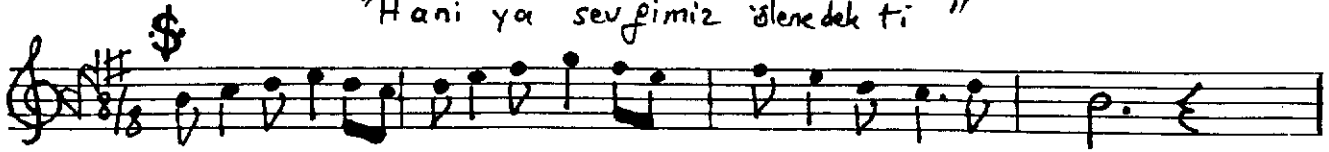


d : 112

SÖZ: TURGUT YARKENT

SEGÂH ŞARKI

"Hani ya sevgimiz ölenekte "



Handwritten musical notation for the first staff of 'The Rose Tree'. The key signature is one sharp (F#), and the time signature is 4/4. The melody consists of the following notes: D4 (quarter), E4 (quarter), F#4 (quarter), G4 (quarter), A4 (half), B4 (half), C5 (quarter), B4 (quarter), A4 (quarter), G4 (quarter), F#4 (quarter), E4 (quarter), D4 (half), C4 (half). The staff ends with a double bar line.



Handwritten musical notation for the first staff of 'The Rose Tree'. The staff is in treble clef with a key signature of one sharp (F#). The melody consists of the following notes: G4 (quarter), A4 (quarter), B4 (quarter), C5 (quarter), B4 (quarter), A4 (quarter), G4 (quarter), F#4 (quarter), E4 (quarter), D4 (half), C4 (half). The piece ends with a double bar line.

Handwritten musical notation for the first staff of 'The Rose Tree'. The staff is in treble clef with a key signature of one sharp (F#). The melody consists of the following notes: G4 (quarter), A4 (quarter), B4 (quarter), C5 (quarter), B4 (quarter), A4 (quarter), G4 (quarter), F#4 (half). The piece ends with a double bar line.

[illegible]

KAL BİN DEN İ ZİM ÖY LE BİR SEV Gİ MİZ

SEGÂH ŞARKI 2nci SAHİFE

"Hani ya sevgimiz ölenede ki ti" MUSTAFA MALAY

VAR DI KI Bİ ZİM ÖM RÜ NE A SIR LAR

YET Mİ YE ÇEK Tİ (SON) SAZ

HA Nİ YA ÖM RÜ HİÇ DOL MI YA ÇAK Tİ

Çİ ÇE Ğİ DÖRT MEV SİM SOL MI YA ÇAK Tİ

ÖY LE BİR AN DI MIZ VAR DI KI Bİ ZİM

BAŞ KA BİR DÜN YA MIZ OL MI YA ÇAK Tİ

HANI YA? SEVGİMİZ ÖLENEDEKİ
BİR EŞİ YOK İDİ DÜNYADA TEK'Tİ
ÖYLE BİR GÖNLÜMÜZ VARDI Kİ BİZİM
SEVMEĞE HİÇ TÖVBE ETMEYECEKTİ

HANI YA? BAŞINA YASTIK'TI DİZİM
SİLİNMEZ DİYORDUN KALBİNDEN İZ'İM
ÖYLE BİR SEVGİMİZ VARDI Kİ BİZİM
ÖMRÜNE ASIRLAR YETMEYECEK Tİ

HANI YA? ÖMRÜ HİÇ DOLMIYACAKTI
ÇİÇEĞİ DÖRT MEVSİM SOLMIYACAKTI
ÖYLE BİR AND'IMIZ VARDI Kİ BİZİM
BAŞKA BİR DÜNYAMIZ OLMUYACAKTI

TURGUT YARKENT